



County Road (CR) 712/Midway Road Widening Project from West of Jenkins Road to Selvitz Road

City of Fort Pierce, St. Lucie County

Financial Project ID: 231440-5-52-01

Virtual Public Meeting
Tuesday, February 13, 2024



County Road (CR) 712/Midway Road Widening Project from West of Jenkins Road to Selvitz Road

St. Lucie County, as Project Sponsor, requested that the Florida Department of Transportation (FDOT) design and construct the CR 712/Midway Road Widening Project through Resolution 2022-192.



Virtual Public Meeting Orientation

Moderator & Presenter



Samantha Kayser
Community Outreach Specialist
The Corradino Group

Meeting Format

Presentation, Q&A Session

- 5 p.m. to 5:30 p.m.
- 5:30 p.m. to 6 p.m.

The Florida Department of Transportation is required to comply with various non-discrimination laws and regulations, including **Title VI of the Civil Rights Act of 1964.**

Public participation is solicited without regard to race, color, national origin, age, sex, religion, disability, or family status.

Persons wishing to express concerns about Title VI may do so by contacting either:

District Four

Florida Department of Transportation
District Four Title VI Coordinator

Sharon Singh Hagyan

(954) 777-4190,

Sharon.SinghHagyan@dot.state.fl.us



Tallahassee Office

Florida Department of Transportation
Statewide Title VI Coordinator

Stefan Kulakowski

(850) 414-4742,

Stefan.Kulakowski@dot.state.fl.us



All inquiries or concerns will be handled according to FDOT procedure and in a prompt and courteous manner.

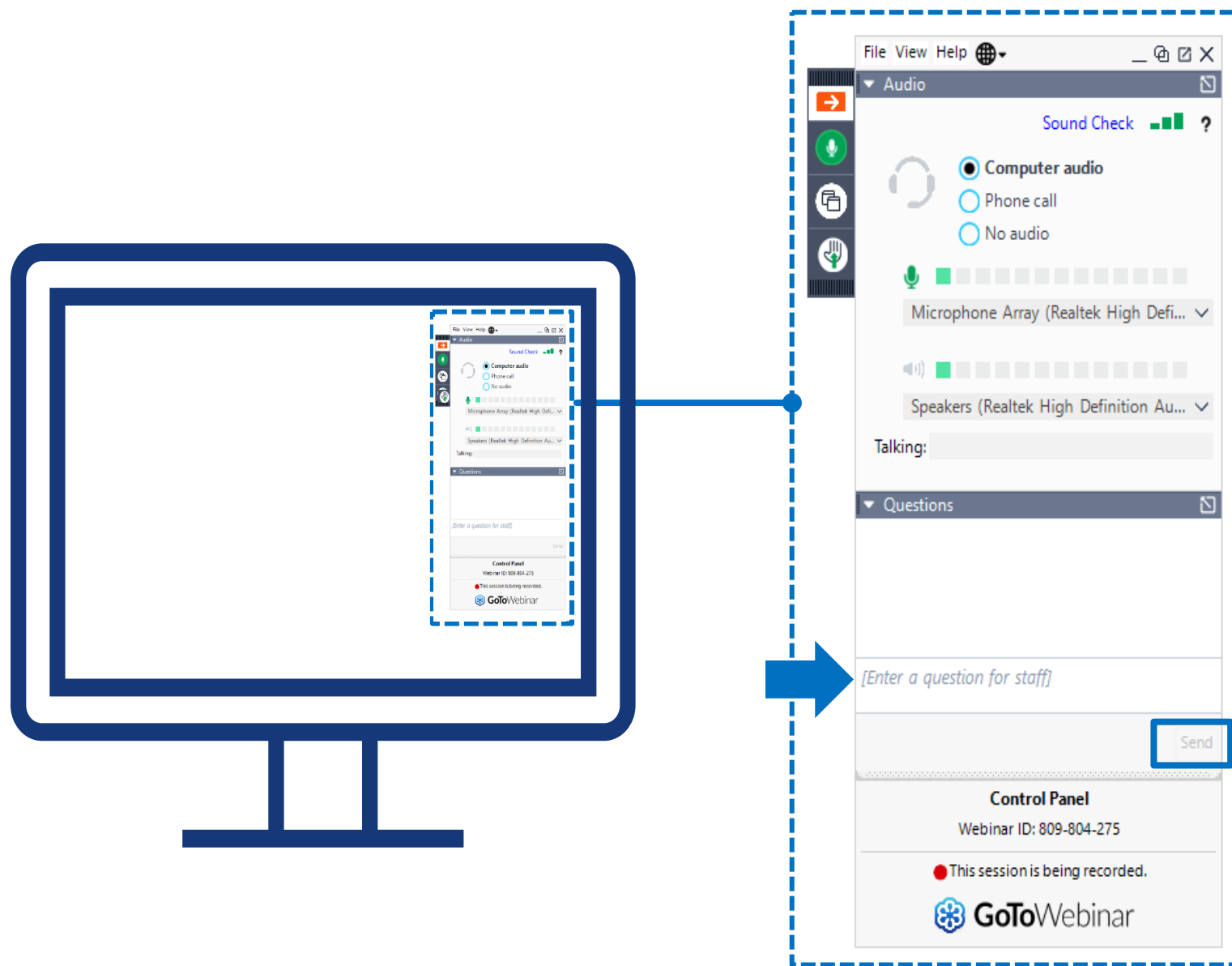
Virtual Public Meeting Orientation



- This Virtual Public Meeting is being recorded.
- All attendees **will remain muted** throughout the meeting.
- If you experience technical difficulties, please contact **GoToWebinar Support at +1(833) 851-8340**.
- At the end of the presentation attendees are also welcome to submit any questions/comments using the GoToWebinar Question Panel and a member of the team will respond during the question-and-answer portion. To request to speak, click the Raise Hand button on the Control Panel and unmute your microphone when your name is called.

Participating on GoTo Webinar

- If you would like to ask a question verbally, please click on the hand icon to be recognized.
- This meeting is being recorded and will be posted to www.d4fdot.com.



Meet the Team



Marla Hewson

Construction Project Manager
FDOT District Four, Treasure Coast
Operations



Haiyan Ou, P.E.

Design Project Manager
FDOT District Four



Lee Watts, P.E.

Senior Project Engineer
JMT, Inc.



James Hughes, P.E.

Design Project Manager
FDOT District Four



Patrick Hayes

Construction Project Administrator
JMT, Inc.



Jamie Polidora, P.E.

Design Liaison
FDOT District Four

Meet the Team



Rick Shepherd
Contractor
Halley Engineering
Contractors, Inc.



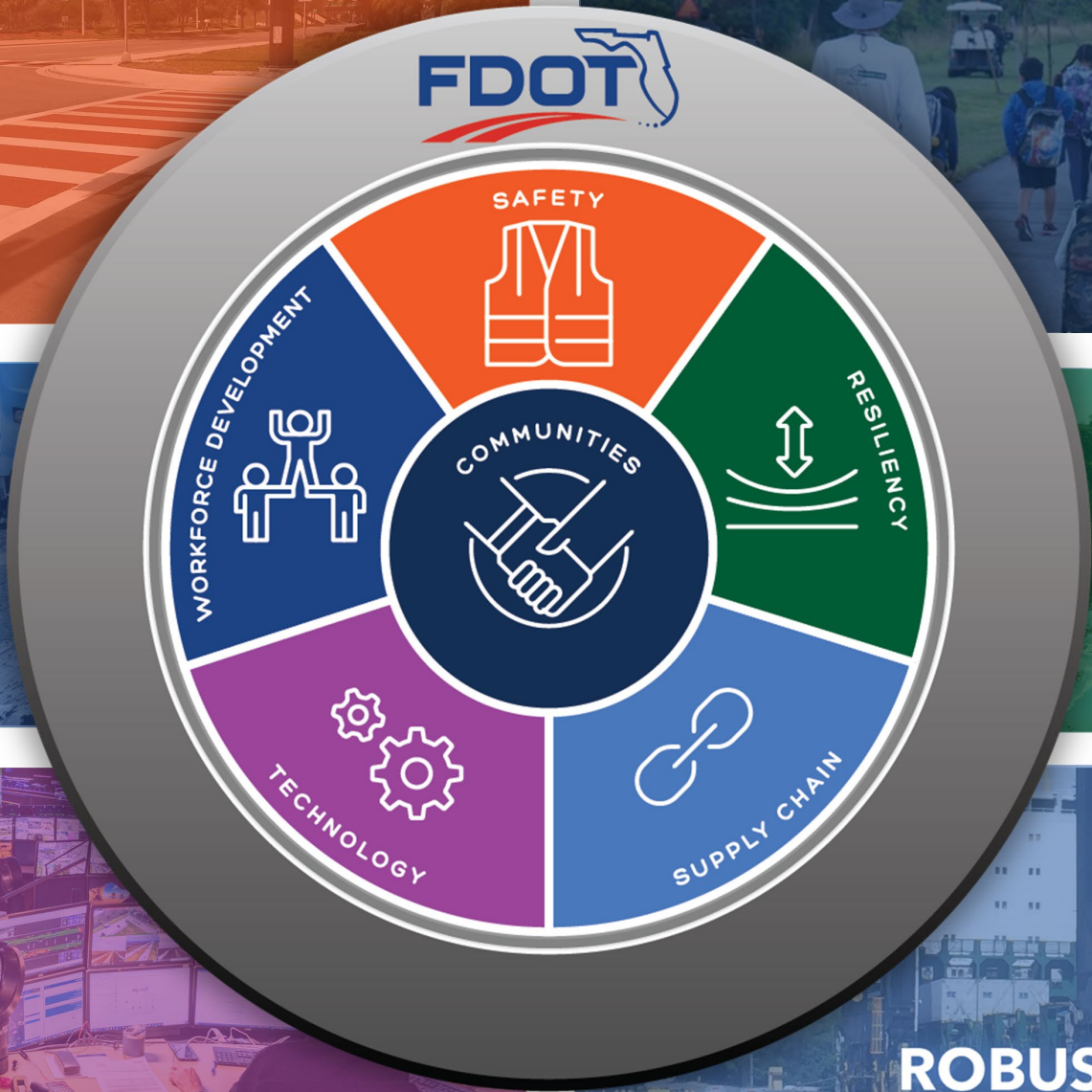
Kevin Iannarone, P.E.
Roadway Engineer of Record
Inwood Consulting Engineers, Inc.



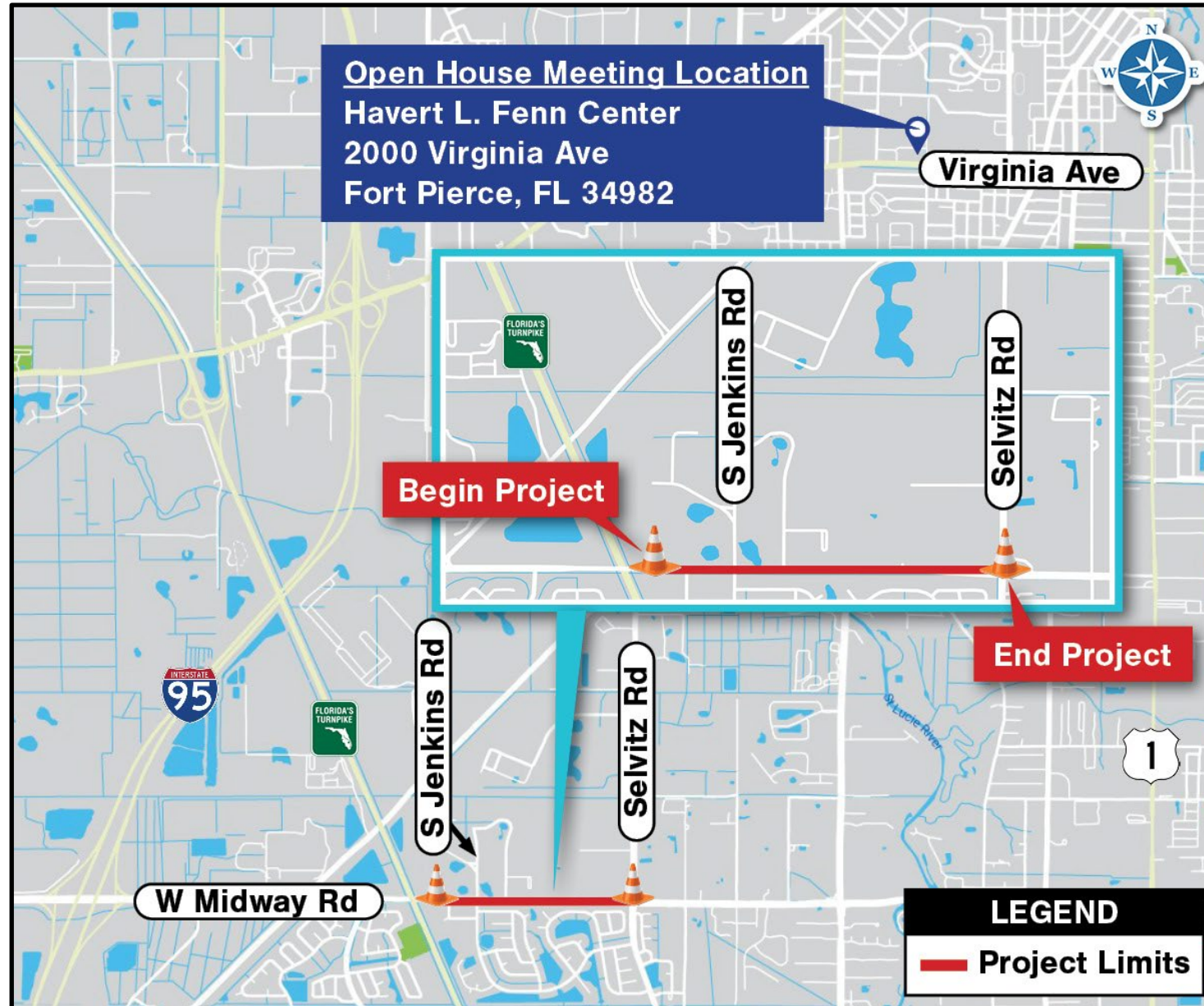
Zach Evans, P.E.
Drainage Engineer of Record
Inwood Consulting Engineers, Inc.



Dan J. Zrallack, P.E.
County Engineer
St. Lucie County



Project Limits



Project Overview

Purpose: Widen CR 712/Midway Road to a four-lane divided roadway with a raised landscaped median, construct 7-foot buffered bicycle lanes on both sides the roadway, construct a 6-foot sidewalk along the north side of the project, construct a 12-foot shared-use bicycle/pedestrian path along the south side of the project, install landscaping along the south side of the project, and upgrade drainage, signage and pavement markings.

Length: 0.785 miles

Contractor: Halley Engineering Contractors, Inc.

Construction Start: March 2024

Estimated Contract Cost: \$23.5 Million

Estimated Completion: Summer 2026

Contract Time: 734 calendar days
(not including weather and holidays)



Intersection of CR 712/Midway Road and Jenkins Road
(pre-construction)

Scope of Work

Roadway and Drainage Improvements

Roadway and Drainage Improvements

- Widen CR 712/Midway Road from a two-lane undivided roadway to a four-lane divided roadway. The eastbound and westbound lanes of CR 712/Midway Road will be separated by a raised landscaped median.
- Construct left turn lanes and median openings to allow access to adjacent side streets, properties and businesses.
- Upgrade drainage, signage, and pavement markings.

Scope of Work

Bicycle, Pedestrian, and Landscaping Improvements

Bicycle, Pedestrian, and Landscaping Improvements

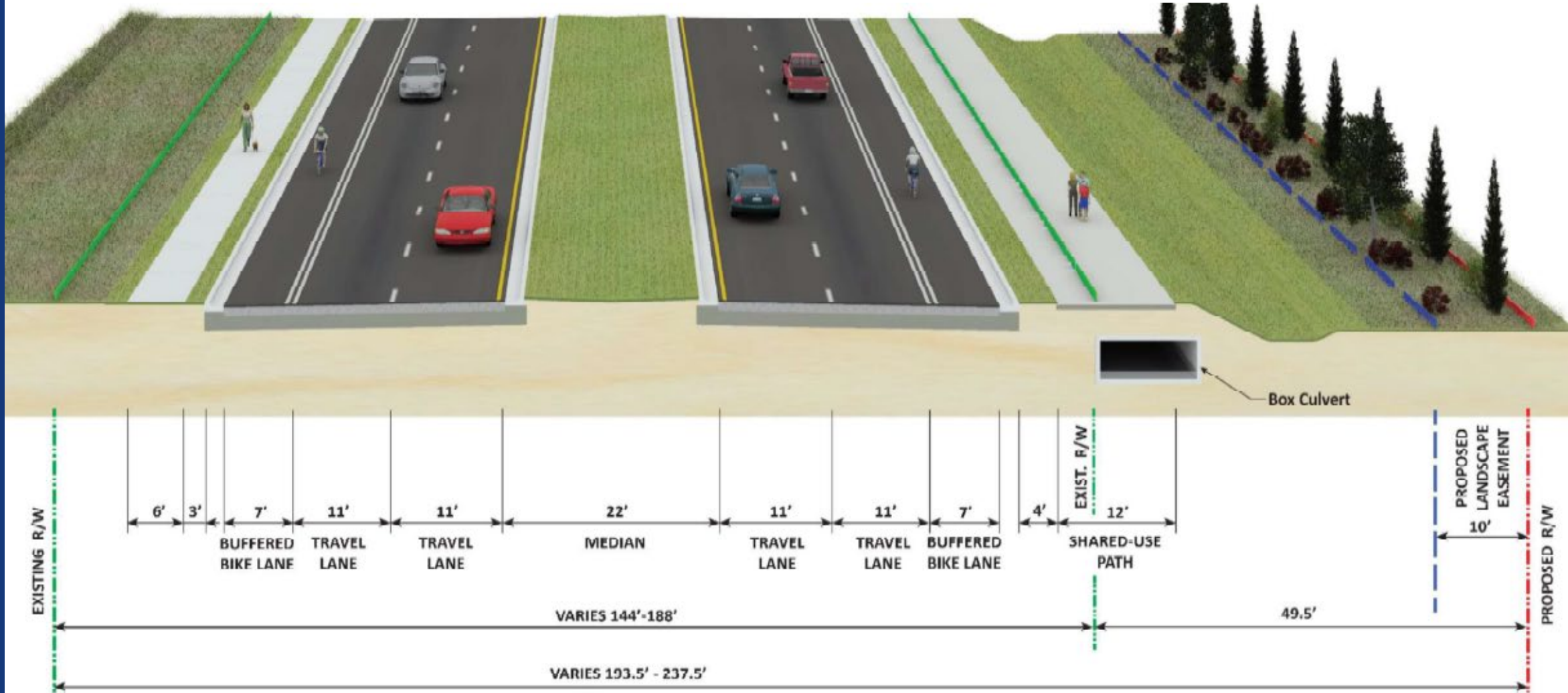
- Construct 7-foot buffered bicycle lanes on both sides of CR 712/Midway Road.
- Construct a 6-foot sidewalk along the north side of CR 712/Midway Road.
- Construct a 12-foot shared-use bicycle/pedestrian path along the south side of the project.
- Install landscaping in the median and along the south side of the project.

Existing Roadway - CR 712/Midway Road

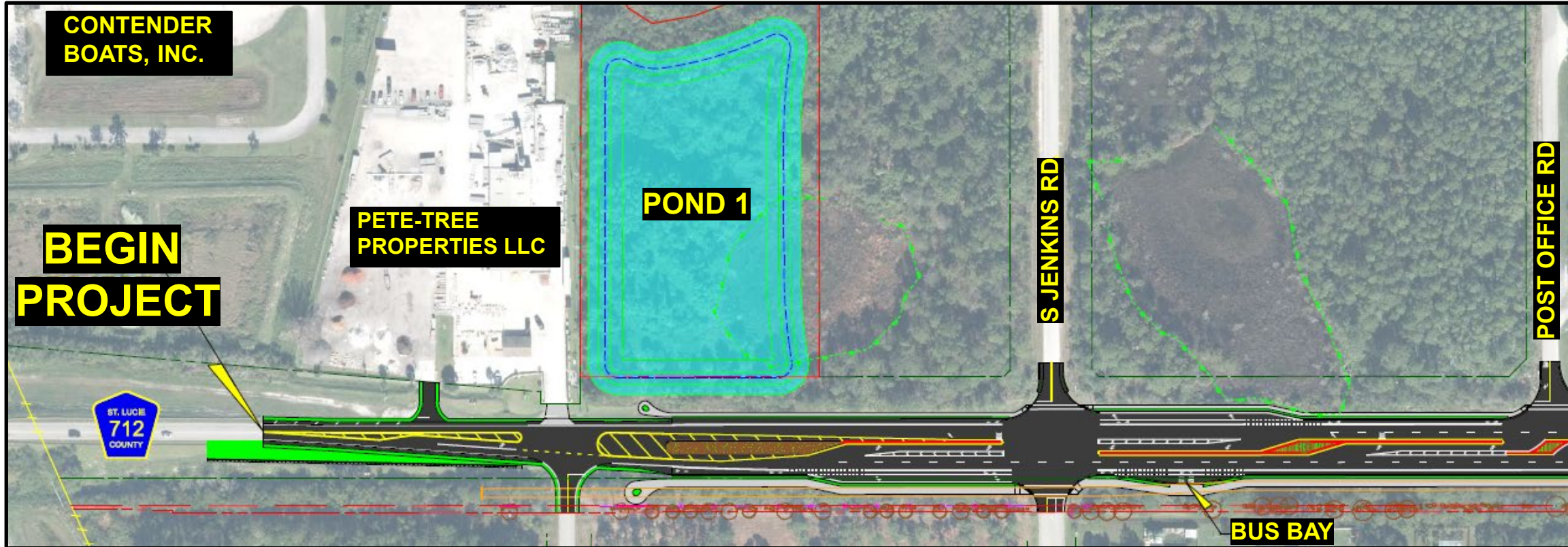


The existing roadway features one travel lane in each direction.

New Typical Section - CR 712/Midway Road (Looking East)

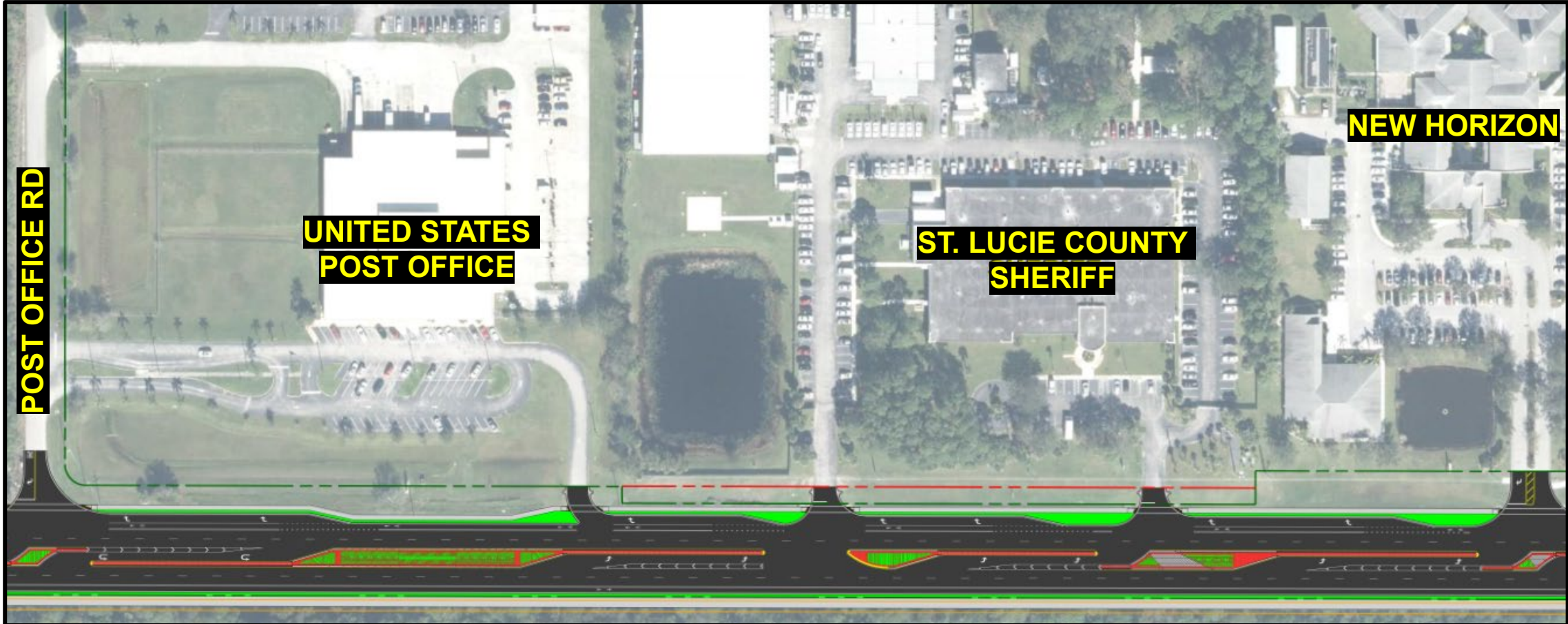


Final Configuration of CR 712/Midway Road from Corporate Way to Post Office Road



LEGEND			
	Widened Roadway		New Retention Pond 1
	New Landscaping		New Sidewalk/Shared-Use Bicycle/Pedestrian Path

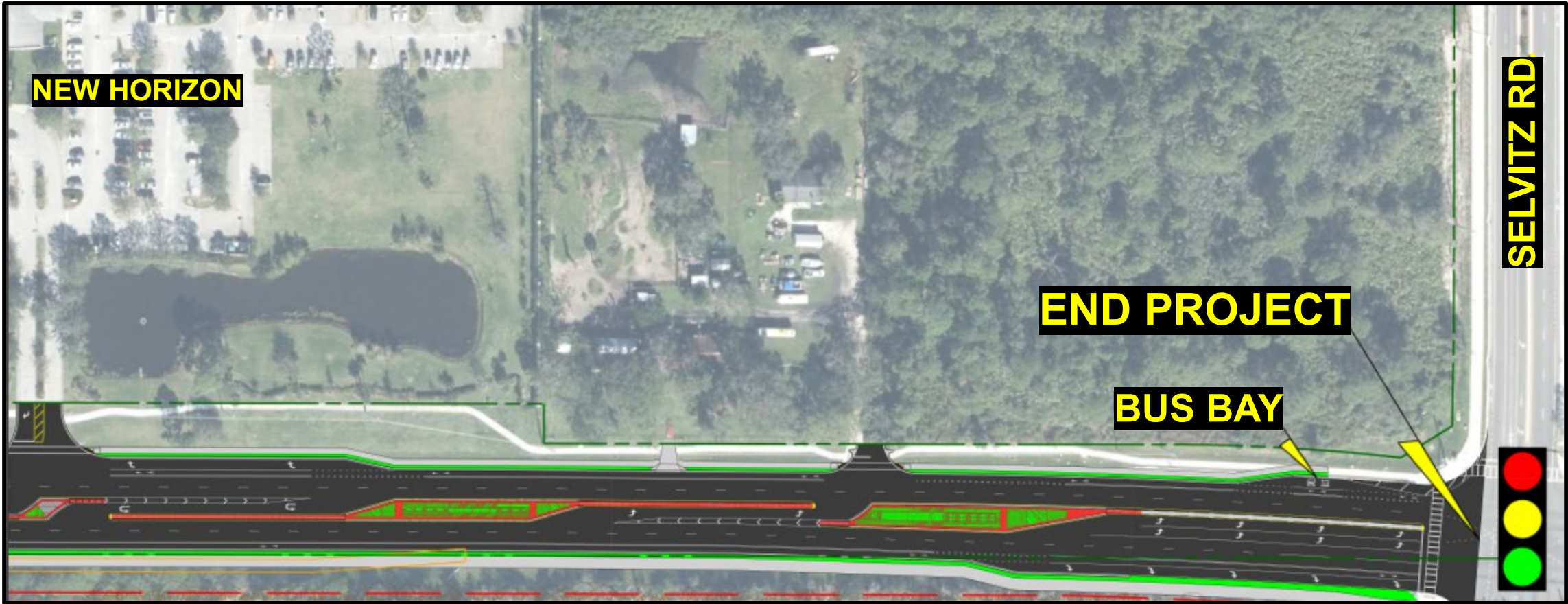
Final Configuration of CR 712/Midway Road from Post Office Road to New Horizon



LEGEND

- Widened Roadway
- New Landscaping
- New Sidewalk/Shared-Use Bicycle/Pedestrian Path

Final Configuration of CR 712/Midway Road from New Horizon to Selvitz Road



LEGEND

- Widened Roadway
- New Landscaping
- New Sidewalk/Shared-Use Bicycle/Pedestrian Path
- Existing Traffic Signal

CR 712/Midway Road

- Single-lane closures are permitted as follows:
 - Daytime, CR 712/Midway Road, Monday through Friday, from 9:00 a.m. to 4:00 p.m.
 - Nighttime, CR 712/Midway Road, Monday through Friday, from 8:00 p.m. to 6:00 a.m.



Eastbound CR 712/Midway Road near
Selvitz Road
(pre-construction)

Cross Streets

- Single-lane closures are permitted as follows:
 - Daytime, cross streets throughout project limits, Monday through Friday, from 9:00 a.m. to 4:00 p.m.
 - Nighttime, cross streets throughout project limits, Monday through Friday, from 8:00 p.m. to 6:00 a.m.
- Residential and business access will be maintained at all times.



CR 712/Midway Road at Post Office Road looking east
(pre-construction)

Phase 1A:

- Install temporary pavement at the intersection of Jenkins Road and CR 712/Midway Road.
- Install temporary pavement on CR 712/Midway Road west of the Jenkins Road intersection.
- Construct drainage improvements and temporary ditches.
- Construct a temporary pedestrian walkway that will maintain access from New Horizons to the Selvitz Road intersection.

Phase 1B:

- Construct drainage improvements.
- Install temporary pavement on the northern side of CR 712/Midway Road.



CR 712/Midway Road at Selvitz Road in front of the United States Post Office looking east (pre-construction)

Phase 1:

- Install temporary overlay pavement on the existing westbound CR 712/Midway Road travel lanes and shift traffic to the north.
- Construct concrete box culvert and fill in Canal 103.
- Construct Pond 1, drainage improvements, and shared-use bicycle/pedestrian path along eastbound CR 712/Midway Road.
- Construct new eastbound travel lanes.

Phase 2:

- Shift traffic to the new eastbound travel lanes.
- Construct drainage structures, inlets, and sidewalks.
- Construct new westbound travel lanes and sidewalk.



CR 712/Midway Road and Jenkins Road intersection
looking west
(pre-construction)

Phase 3:

- One travel lane in each direction will be open to traffic on the newly constructed roadway.
- Construct median and left turn lanes.



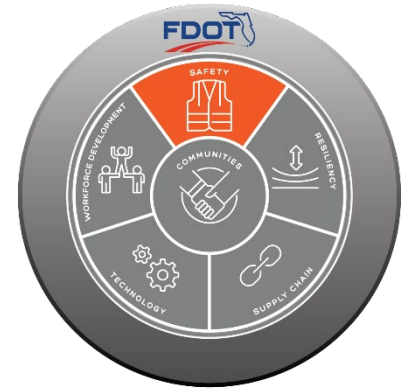
Intersection of CR 712/Midway Road and Selvitz Road
looking west
(pre-construction)

Phase 4:

- Construct the remaining traffic separators.
- Install landscaping in the median and landscape buffer along the south side of the roadway.
- Place final friction course pavement.
- Install final pavement markings.

Safety and Local Coordination

- **Public Safety is our Top Priority!**
 - **Work Zone Signage & Maintenance of Traffic**
 - Advanced warning and project signage will be placed throughout the construction corridor to alert the traveling public
 - **Local Agency & Stakeholder Coordination**
 - The project team will continue working closely with local stakeholders including local municipalities, schools, neighborhoods and other local agencies to ensure safety standards are met and impacts to the public are minimized in any way possible
 - **Emergency vehicles will be provided access at all times**

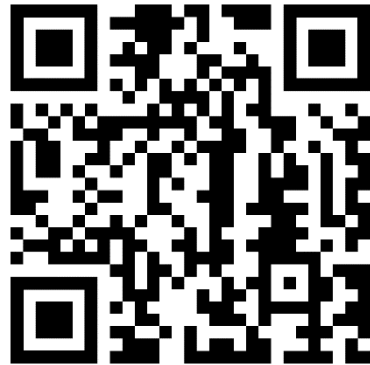


Lighted Message Board

Community Outreach

- To receive project specific updates please email skayser@corradino.com to be added to the distribution list
- A weekly press release will be distributed every Friday
- Additional project specific information can be found on the website

****All project updates will be posted to the District Four website.****

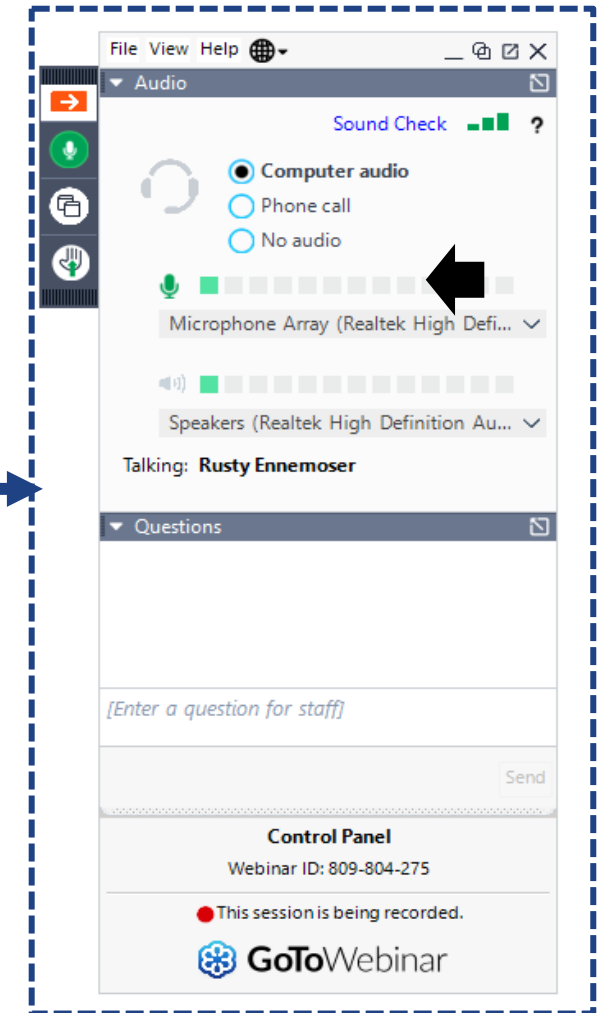


Scan this QR code to go to the District Four Website.

www.d4fdot.com

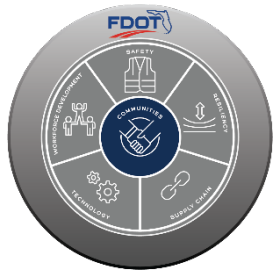
Questions and Answers

- Attendees are welcome to submit questions/comments using the GoToWebinar Question Panel



Contact Us

Throughout the project, questions or comments can be submitted via email or phone.



Samantha Kayser
Community Outreach Specialist



skayser@corradino.com



(772) 579-5479

Patrick Hayes
Construction Project Administrator



phayes@jmt.com



(954) 290-0856

Marla Hewson
Construction Project Manager



marla.hewson@dot.state.fl.us



(772) 349-6728

This PowerPoint presentation has been uploaded to GoToWebinar for download.

FDOT Safety Message



[FLHSMV.GOV/STAYATTHESCENE](https://www.flhsmv.gov/stayatthescene)





**Thank you for attending today's
Virtual Public Meeting!**